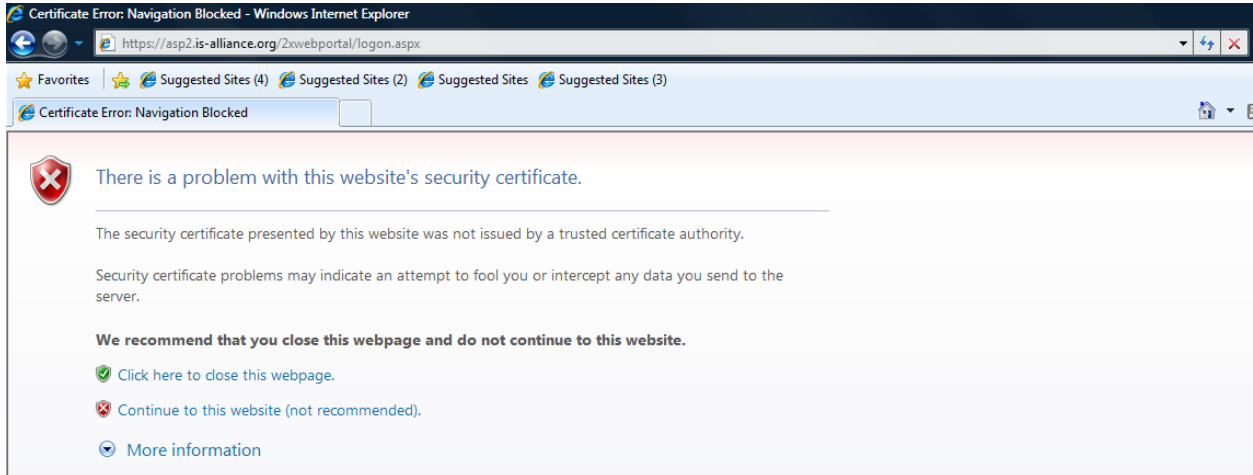
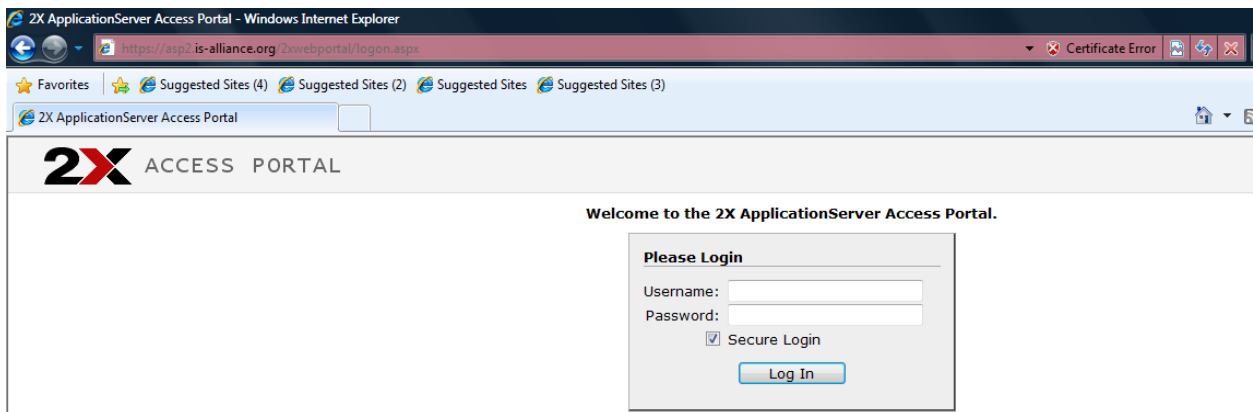


The 2X address is: <https://asp2.is-alliance.org/2xwebportal/logon.aspx>

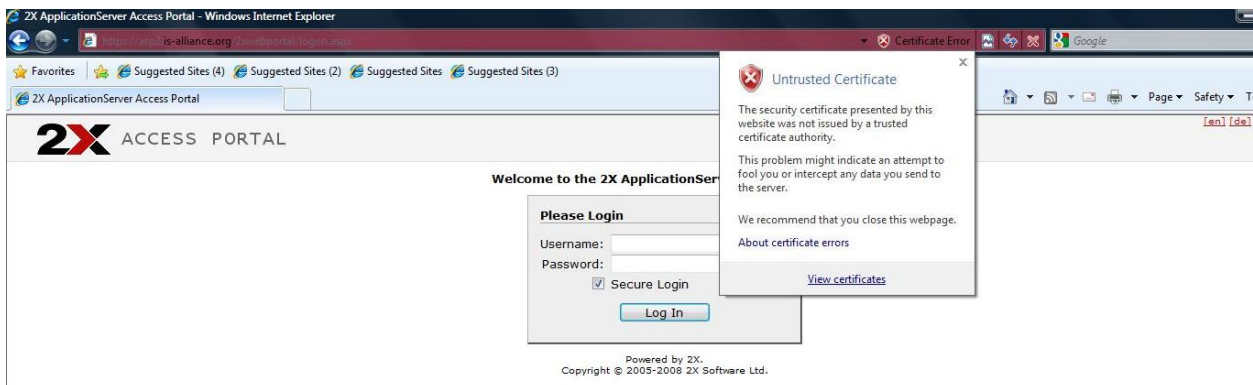
If you see the below error message, please Click Continue to this website (not recommended). It is ok to proceed to this website.



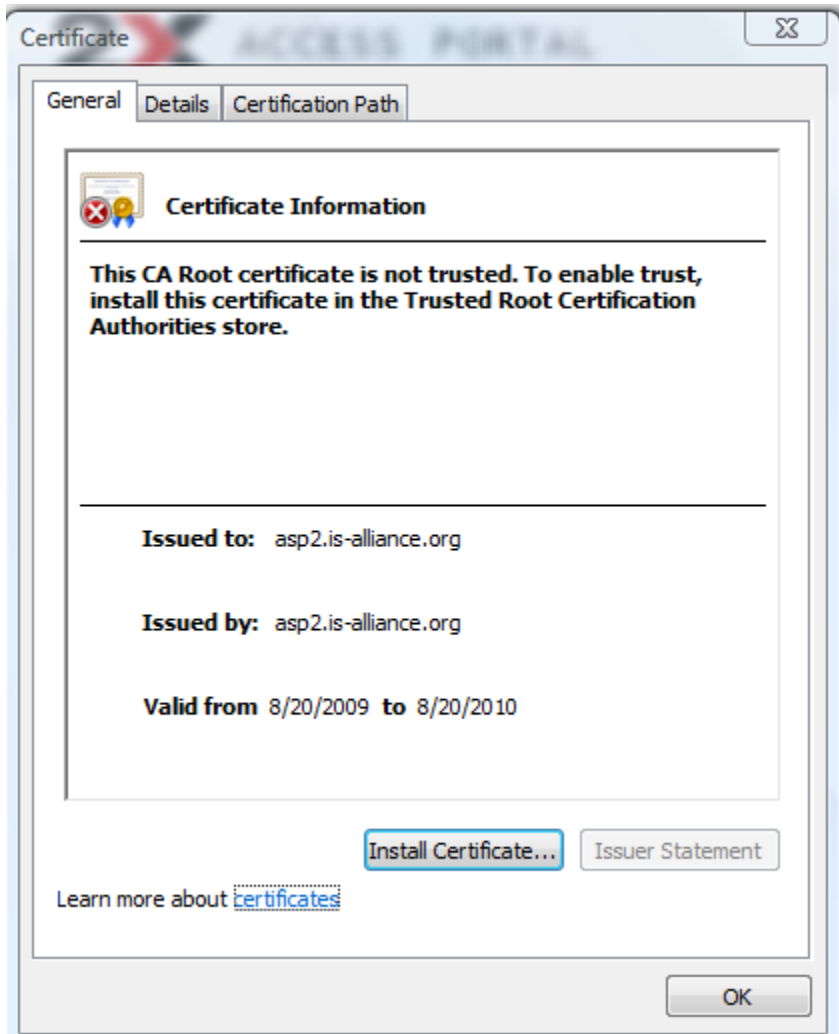
You will see the certificate error message next to URL, at the far right.



Click on the certificate error message



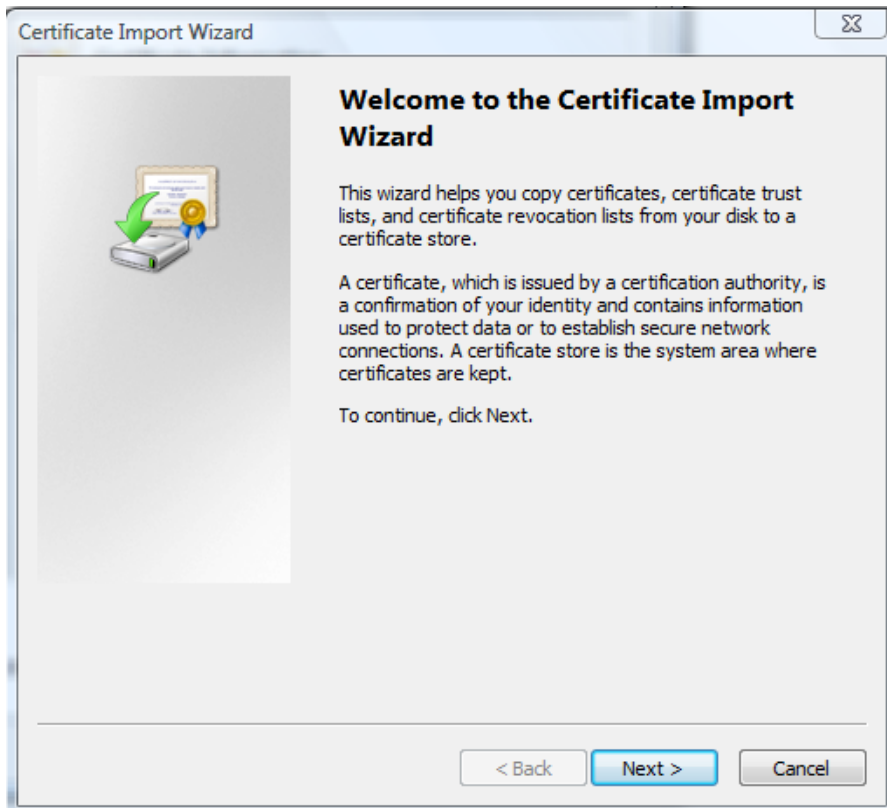
Click on View Certificate



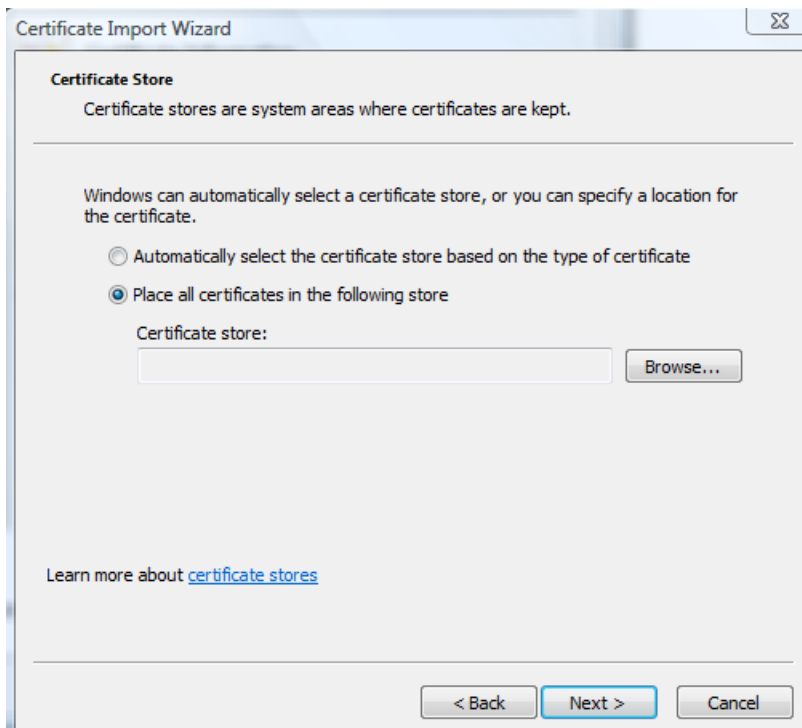
Then Click on Install Certificate

Follow the below instructions to properly install the certificate in Internet Explorer

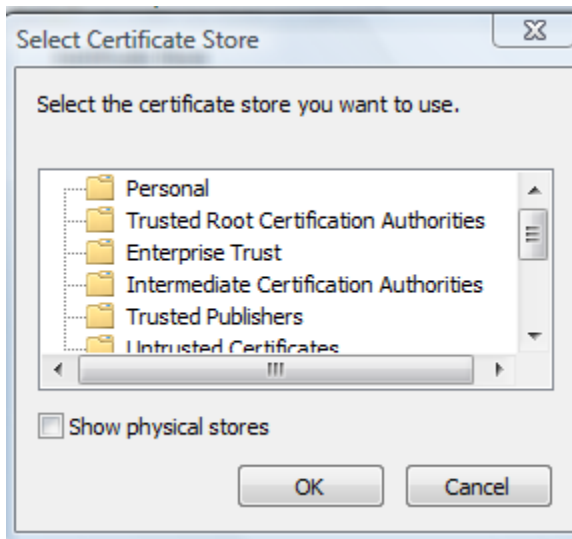
Please click Next



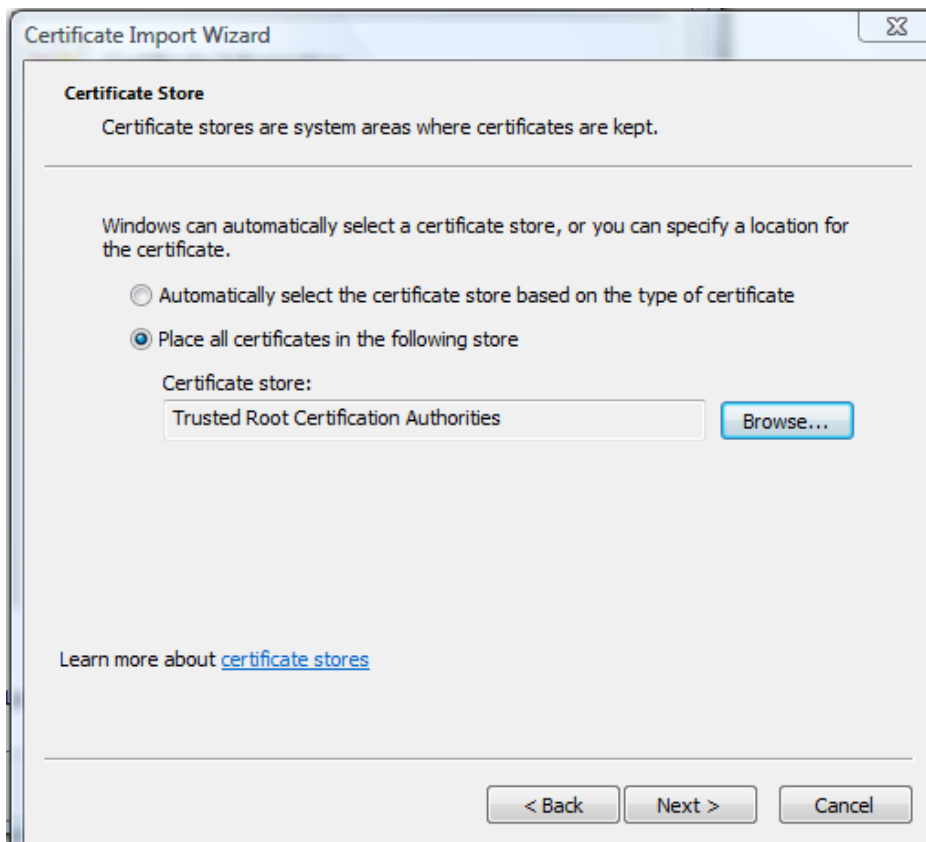
Choose Option: Place all Certificates in the following Store. Then Click on Browse



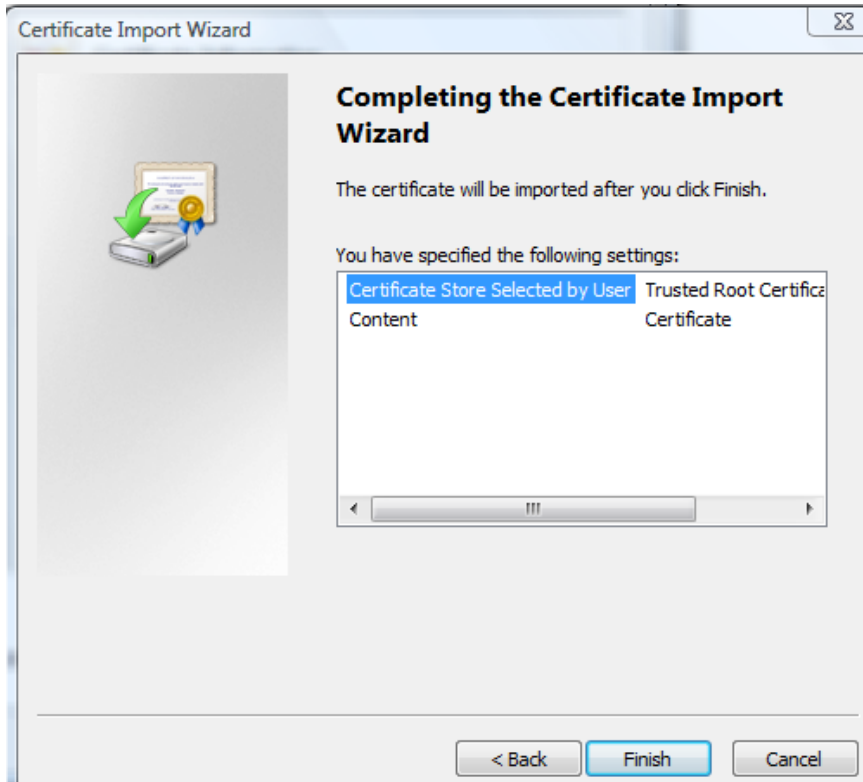
A Window will pop up, please Select Trusted Root Certification Authorities. Press Ok.



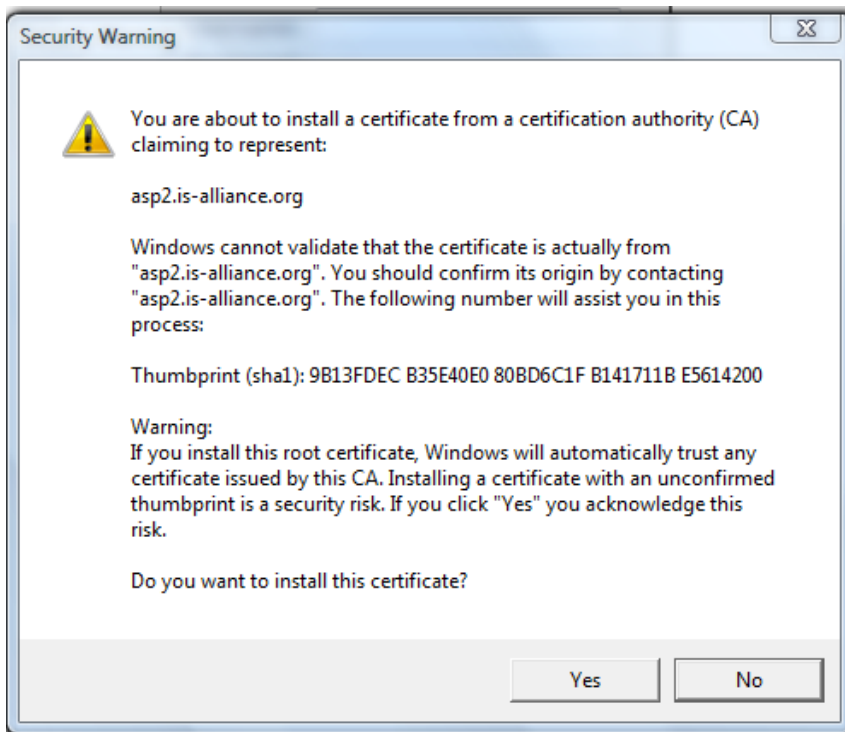
Your options will now look like below, please press Next



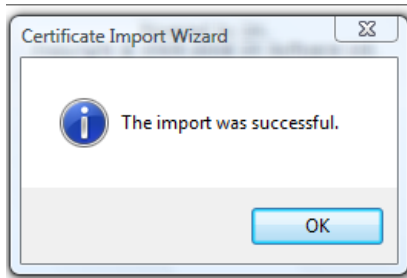
Click Finish



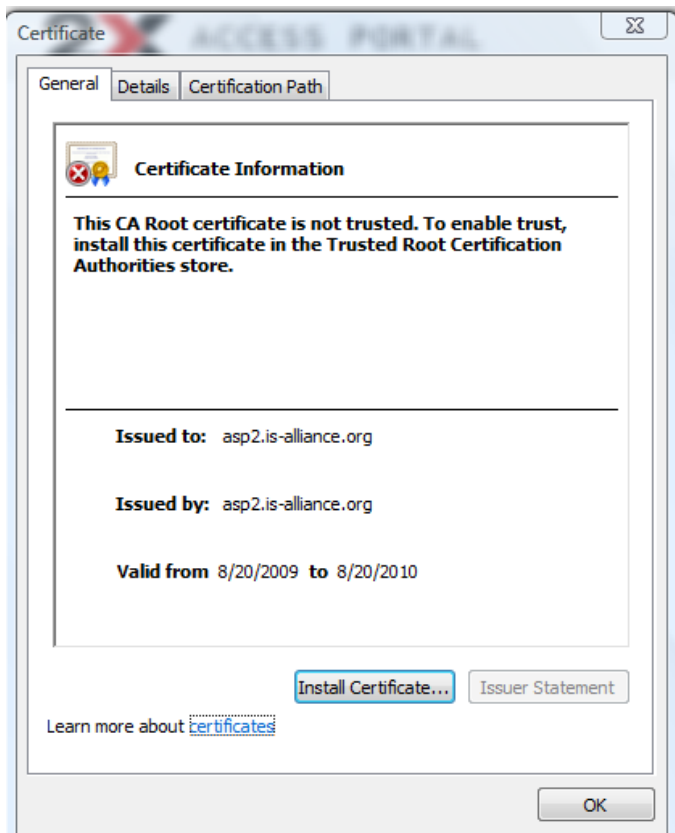
A box will pop up, Click Yes to install the certificate



You will get a confirmation that your certificate install was successful. Click Ok



Click Ok on the below message.



Close out of Internet Explorer. Reopen Internet Explorer and log back on to 2X

<https://asp2.is-alliance.org/2xwebportal/logon.aspx>

The certificate error is no longer an issue.

When logging into 2X for the first time, a pop message will appear. Please select option:

Do not ask me again

Then click Yes.

