

## Mission Statement

GATEWAY COMMUNITY HEALTH will ensure access to a contracted network that provides comprehensive, culturally competent mental health and substance abuse services for children, adults, seniors, and their families. These services will support recovery, independence, collaboration and empowerment within the home and community.

## Vision

As an innovative mental health leader, Gateway Community Health will provide access to the highest quality and accessible services in an efficient, consumer-focused manner. Meaningful opportunities will be available for consumers to have an Input into their recovery, the network and its providers' operations.

## Values

The corporate values governing GCHI's development include the following:

- Highly skilled, competent staff, utilizing evidence-based practices (EBP)
- Recovery focus promoting hope, healing, empowerment and decreasing stigma of mental illness
- Consumer driven environment which includes their involvement in planning and evaluation of their services
- Quality driven process throughout the organization
- Respect for all communities, cultures, ethnic populations
- A person's right to self-determination and choice
- Acting with honesty and integrity, the essential ingredients of trust
- Access to mental health and substance abuse services in a safe, healthy and caring environment
- **Gateway Community Health** operates in accordance with the highest standards in all relationships with consumers, funders, regulatory bodies, allied agencies/programs, and the community.

## Our Services:

**Gateway Community Health** offers a full array of services for children, adolescents and adults in need of mental health treatment. In partnership with providers throughout Wayne County, Gateway offers the following services.

### Services for Adults:

Community Based Programs:

- Assessments Psychological Testing
- Behavioral Management
- Case Management
- Individual, Family and Group Therapy
- Crisis Intervention
- Family Support Services
- Intensive Case Management Services

Residential Services:

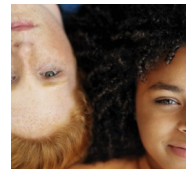
- Adult Specialized Foster Care Services
- Transitional Housing

Hospital Based Services:

- Community and State Inpatient Psychiatric Hospitalization
- Crisis Care available 24 hours a day, 7 days a week
- Medication Stabilization

This is a partial listing of services.  
For a complete list of services, contact Gateway at 313-262-5050 or 800-973-4283

**Please Note:** Pre-Authorization is required for some services through Gateway Community Health and can be obtained by calling 313-262-5050.



Gateway Community Health is funded by Detroit-Wayne County Community Mental Health Agency

03/11



## Adult Outpatient Services

3011 W. Grand Blvd.  
Suite 2000

Detroit, MI 48202

1-800-973-4283

Or 313-262-5050

TTY: 313-871-1806

[www.gchi.org](http://www.gchi.org)

Assistance available via  
telephone 24 hours, 7  
days a week

## Adult Outpatient Service Providers:

**Adult Well-Being Services**  
[www.awbs.org](http://www.awbs.org)  
1423 Field Avenue  
Detroit, MI 48214  
313-924-7860

**Adult Well-Being Services**  
5555 Conner, Suite 1000  
Detroit, MI 48213  
313-347-2070

**Adult Well-Being Services**  
6700 Middlebelt Road  
Romulus, MI 48174  
734-629-5000

**Arab-American and Chaldean Council**  
[www.myacc.org](http://www.myacc.org)  
62 W. 7 Mile Road  
Detroit, MI 48203  
313-893-6172

**Arab-American and Chaldean Council**  
16921 W. Warren Road  
Detroit, MI 48228  
313-581-7287

**Community Care Services**  
[www.comcareserv.org](http://www.comcareserv.org)  
26184 Outer Drive  
Lincoln Park, MI 48146  
313-389-7500

**Community Care Services**  
25 Owen Street  
Belleville, MI 48111  
734-697-7880

**Community Care Services**  
26650 Eureka, Suite A  
Taylor, MI 48186  
734-955-3550

**Detroit Central City Community  
Mental Health, Inc.**  
[www.dcccmh.org](http://www.dcccmh.org)  
10 Peterboro  
Detroit, MI 48201  
313-831-3160

**Detroit East Community Mental Health Center**  
[www.detroiteastcmh.org](http://www.detroiteastcmh.org)  
11457 Shoemaker  
Detroit, MI 48213  
313-331-3435

**Detroit East Community Mental Health Center**  
3646 Mt. Elliott  
Detroit, MI 48207  
313-921-4700

**Detroit East Community Mental Health Center**  
6309 Mack  
Detroit, MI 48207  
313-921-4700

**Lincoln Behavioral Services**  
[www.lbscares.com](http://www.lbscares.com)  
9315 Telegraph Road  
Redford, MI 48239  
313-450-4500

**Lincoln Behavioral Services**  
24425 Plymouth Road  
Redford, MI 48239  
313-450-0411

**Lincoln Behavioral Services**  
14500 Sheldon Road, Suite 160  
Plymouth, MI 48170  
734-459-5590

**North Central Health Center**  
[www.northcentralhealthcenter.org](http://www.northcentralhealthcenter.org)  
17141 Ryan Road  
Detroit, MI 48212  
313-369-1717

**North Central Health Center**  
4321 E. McNichols  
Detroit, MI 48212  
313-369-1717

**Sinai Grace Outpatient Services**  
[www.sinaigrace.org](http://www.sinaigrace.org)  
14230 W. McNichols  
Detroit, MI 48234  
313-966-3100

**Team Mental Health Services**  
[www.team-mentalhealth.com](http://www.team-mentalhealth.com)  
2939 Russell Street  
Detroit, MI 48207  
313-396-5300

**Team Mental Health Services**  
19170 Eureka Road  
Southgate, MI 48195  
734-324-8326

**University Psychiatric Services**  
[www.med.wayne.edu/psychiatry/UPC\\_BOD.htm](http://www.med.wayne.edu/psychiatry/UPC_BOD.htm)  
2751 E. Jefferson, Suite 200  
Detroit, MI 48207  
313-993-3434



For information on additional services,  
please contact Gateway Community Health at  
313-262-5050 or 800-973-4283